



ISC



- Mission
- Faculty/staff
- Scientific & technological productivity, last 5 years
- R+D projects & grants, last 5 years
- Companies generated, last 5 years
- R+D areas
- Vision
- Organization chart

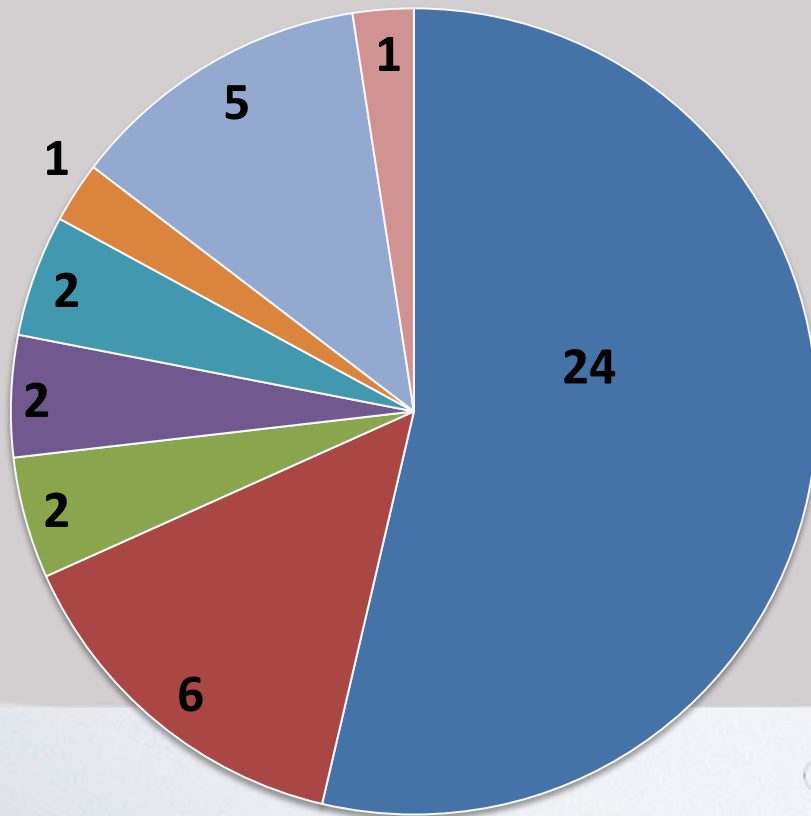


## MISSION

- Virtual institute promoted by the Public University of Navarre.
- Mission: design, analysis, implementation and optimization of Smart environments (Smart Home, Smart City, Smart Region, etc.)
- Multidisciplinary team able to develop large-scale projects in these fields.
- Open and collaborative initiative.

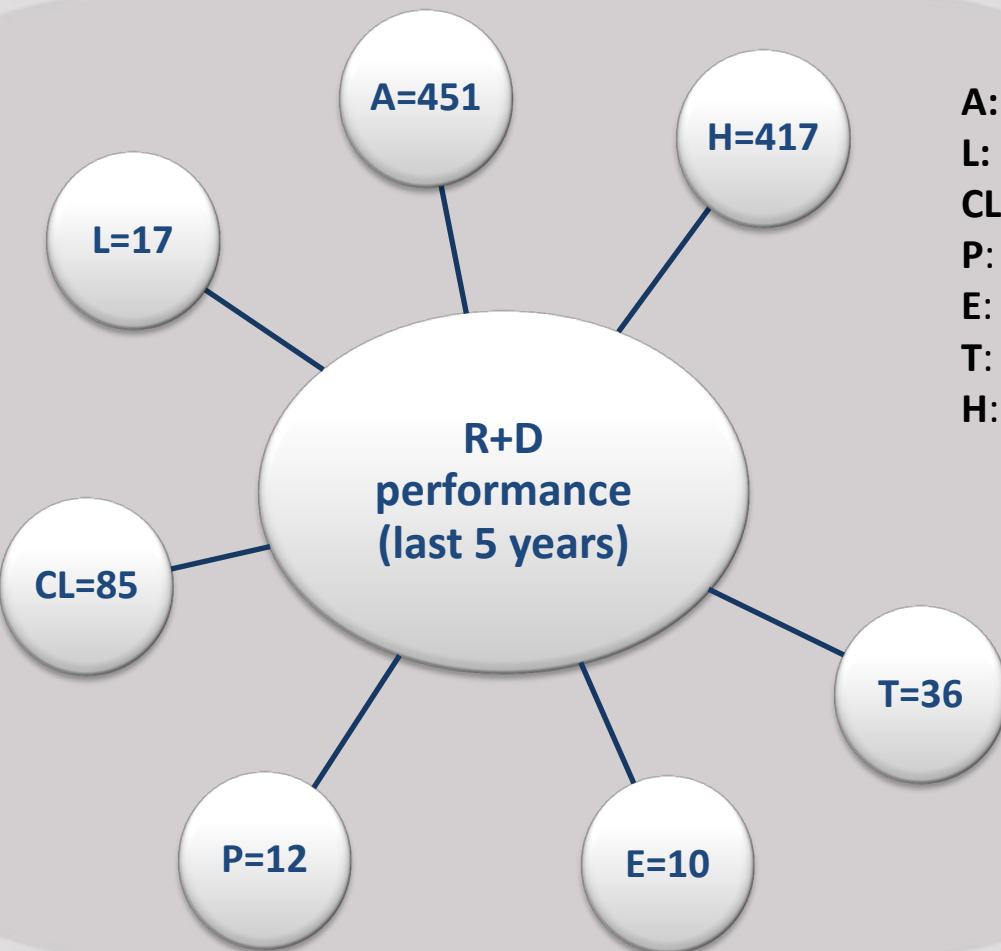


88 senior researchers. Including PhD & PostDoc students, >100 researchers

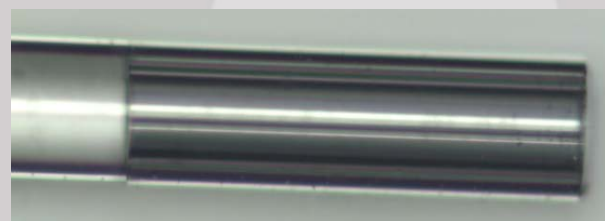


**Number of senior researchers by Department**

- Electrical and Electronic Engineering
- Automatics and Computing
- Statistics and Operational Research
- Agricultural Projects and Engineering
- Public Law
- Mechanical, Energy and Materials Engineering
- Mathematics and Computer Engineering
- Sociology

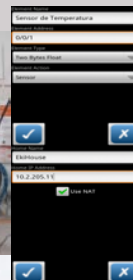
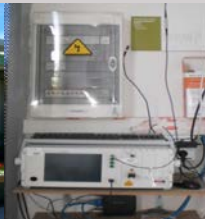


- A:** Journal papers
- L:** Books
- CL:** Book chapters
- P:** Patents
- E:** Companies created (spin-offs)
- T:** PhD theses
- H:** Aggregated h index

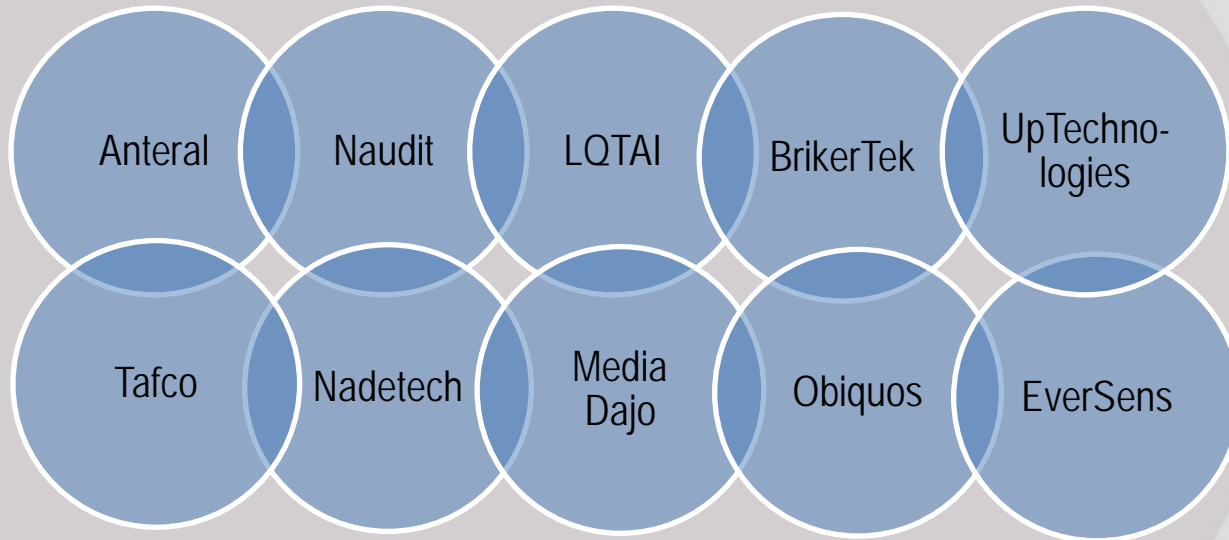


## R+D PROJECTS & GRANTS, LAST 5 YEARS

|                        |               |                     |
|------------------------|---------------|---------------------|
| <b>Public funding</b>  | No. projects  | 128                 |
|                        | Amount        | 13.209.282 €        |
| <b>Private funding</b> | No. contracts | 215                 |
|                        | Amount        | 6.015.221 €         |
| <b>TOTAL</b>           | <b>Number</b> | <b>343</b>          |
|                        | <b>Amount</b> | <b>19.224.504 €</b> |



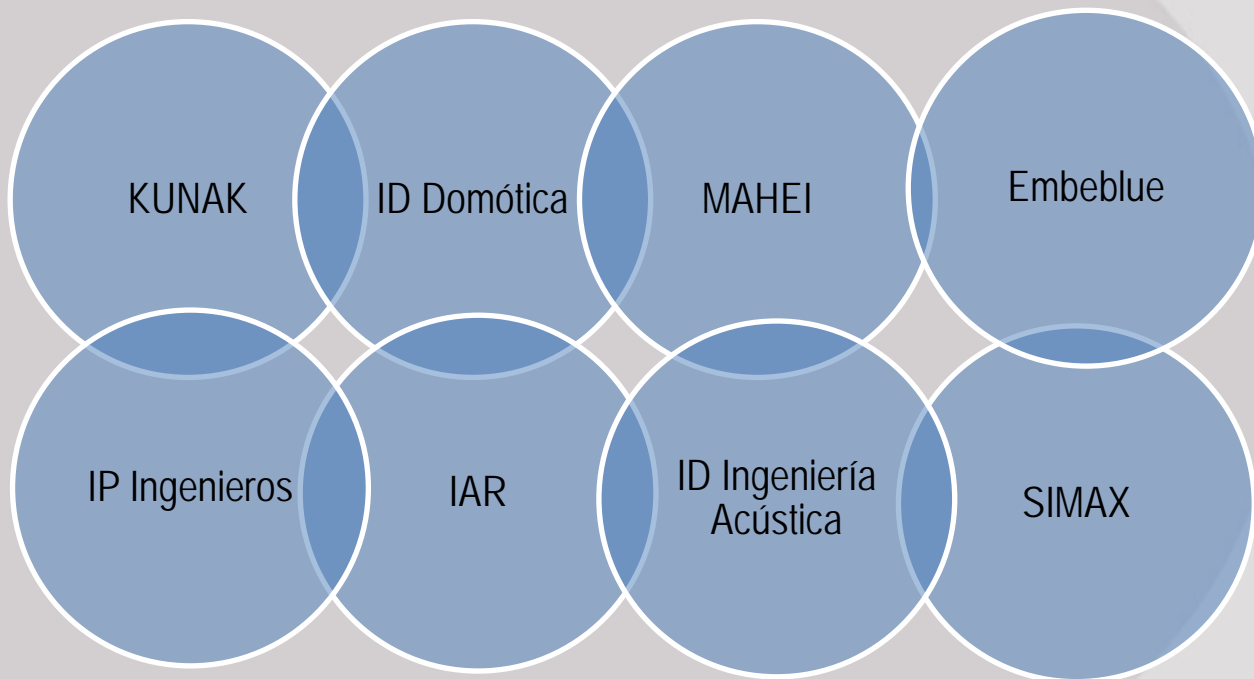
## COMPANIES GENERATED, LAST 5 YEARS



Spin  
-  
offs

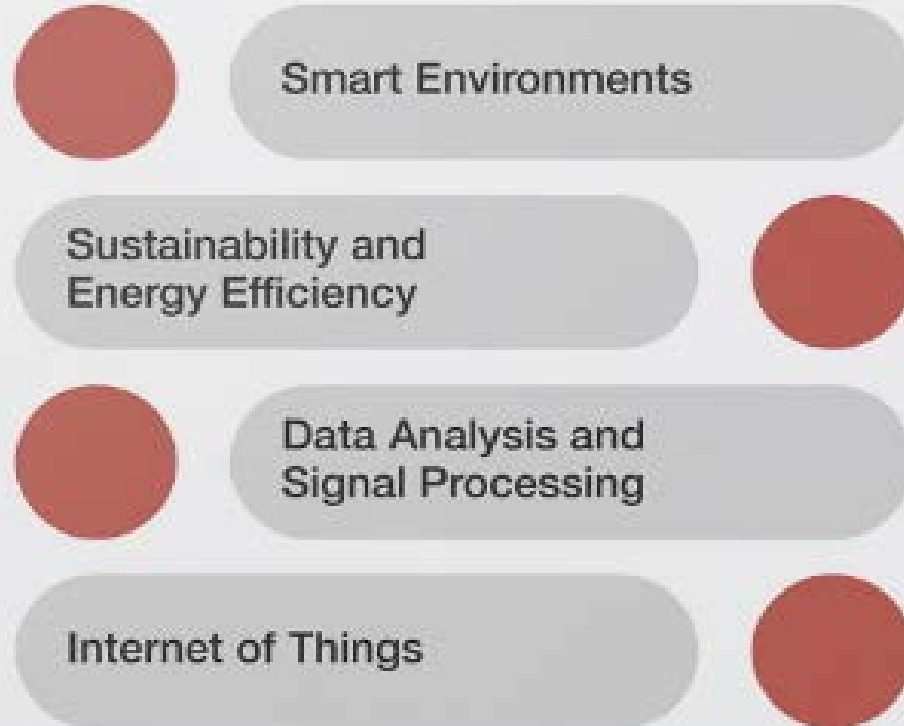
## OTHER CLOSE COMPANIES

Satellite companies





## AREAS OF INTEREST



### A. Sensors

A.1 Optical fibers

A.2 Electronic sensor interfaces

A.3 Wireless sensors

A.4 WSNs

### B. ICT

B.1 Terahertz Technologies

B.2 Antennas and Microwaves

B.3 Communication Electronics

B.4 Network Analysis

### C. Renewable Energies and Environment

C.1 Renewable Energies and Smart Grids

C.2 Power Electronics

C.3 Environmental Sustainability

C.4 Energy Efficiency

### D. Big Data

D.1 Artificial Intelligence

D.2 Data Mining

D.3 Multiprotocol Platforms

D.4 Computer Systems

### E. Enabling Technologies

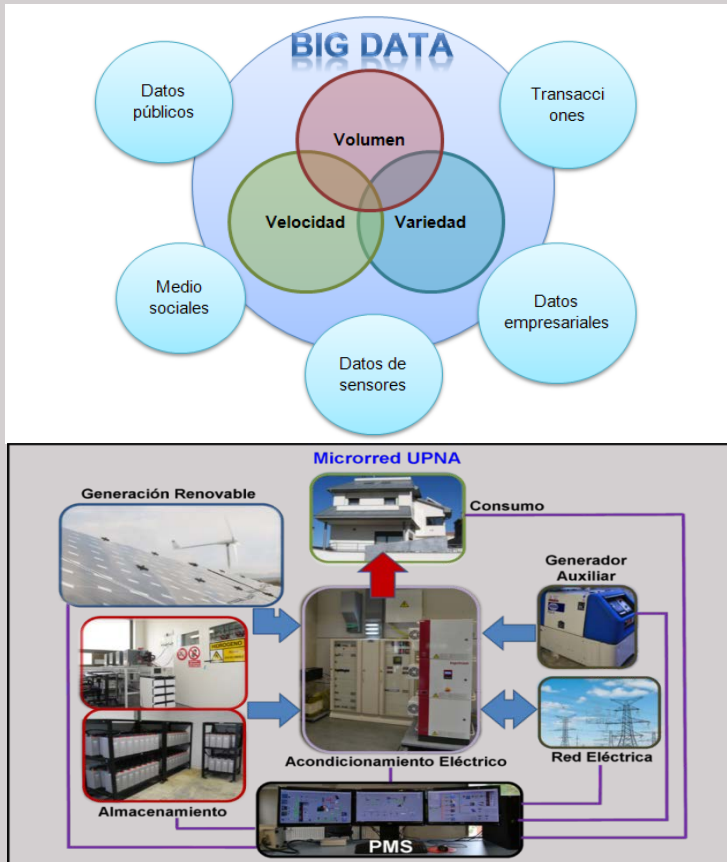
E.1 Transport

E.2 Accesibility

E.3 e-government

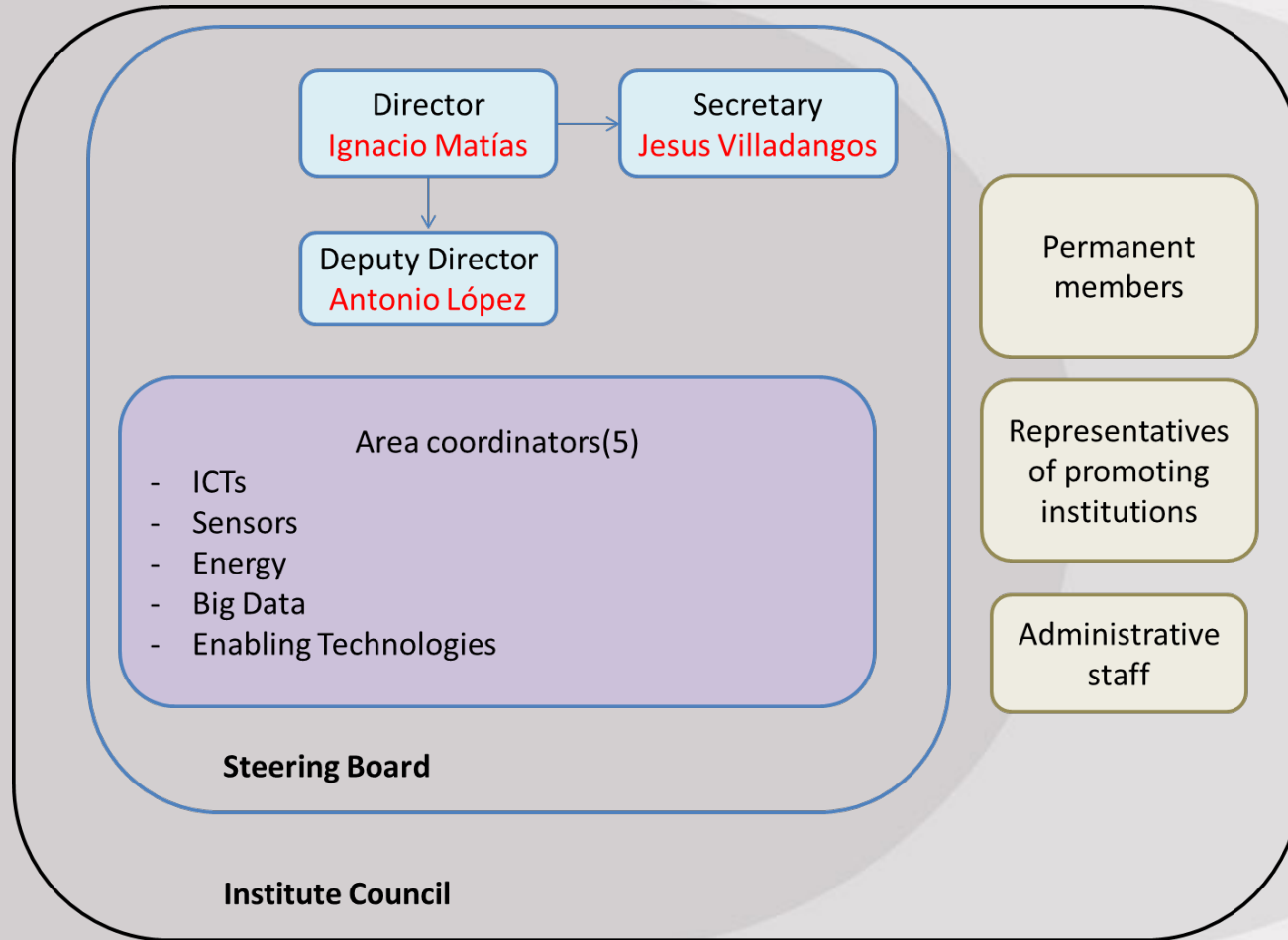
E.4 e-services

E.5 Digital Signal Processing



- Promoting excellence and cross-fertilization of the institute research groups, enabling cooperation in high-impact multidisciplinary projects.
- Align the objectives of the institute with priorities of regional, national and international R+D plans.
- Promoting cooperation and development of R+D networks with the science-technology-industry system stakeholders.

## ORGANIZATION CHART





## R+D PROJECTS 2016

|              |             | Contracts             | National funding |                       | International funding |         |                          |                     | Total Global |
|--------------|-------------|-----------------------|------------------|-----------------------|-----------------------|---------|--------------------------|---------------------|--------------|
|              |             |                       | Regional         | National              | H2020                 | POCTEFA | Other(SU DOE, COST, etc) | Total International |              |
| Accepted     | ISC         |                       |                  | 6*                    |                       |         |                          |                     | 6            |
|              | ISC Members | 19                    | 26               | 10                    | 2                     |         | 1                        | 3                   | 58           |
| Pendint      | ISC         |                       |                  | 1                     |                       | 1       |                          | 1                   | 2            |
|              | ISC Members |                       |                  | 3                     |                       | 1       | 1                        | 2                   | 6            |
| Rejected     | ISC         |                       |                  |                       | 2                     |         |                          | 2                   | 2            |
|              | ISC Members |                       | 2                | 2                     | 2                     |         | 3 + 2                    | 7                   | 9            |
| <b>Total</b> |             | <b>19<sup>1</sup></b> | <b>28</b>        | <b>22<sup>3</sup></b> |                       |         |                          | <b>15</b>           | <b>84</b>    |

<sup>1</sup>0,5 M€

<sup>3</sup>1,5 M€

## R+D AREAS. INNER CLASIFICATION

### 1 Sensors

Manuel López-Amo  
Francisco J. Arregui  
Ignacio R. Matías  
Cándido Bariáin  
Francisco Falcone  
Alayn Loayssa  
Jesús Corres



### 2 ICTs

Carlos del Río  
Ramón Gonzalo  
Íñigo Ederra  
Txema Lopetegui  
Jorge Teniente  
Antonio López  
María J. Erro  
Mikel Izal  
Eduardo Magaña



### 5 Enabling Technologies

Joaquín Sevilla  
Rafael Cabeza  
David Benito  
Fermín Mallor  
José Alenza  
Martín Razquin  
Armando Malanda  
Luis Serrano  
Javier Faulín  
Jesús Oliva



### 3 Renewable Energies and Environment

Luis Marroyo  
J. Javier López  
Pablo Sanchis  
Eugenio Gubía  
David Astrain  
José Luis Torres  
Almudena García



### 4 Big Data

Edurne Barrenechea  
Humberto Bustince  
Daniel Morató  
Ana Burusco  
Jesús Villadangos  
Juan C. Jorge  
José R. González de Mendivil  
José J. Astrain

