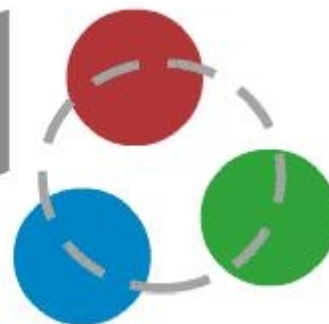


# Parc Científic i Tecnològic Agroalimentari de Lleida



**Universitat de Lleida**

LA PAERIA



**Ajuntament de Lleida**



[Environment](#)

[Spaces](#)

[Services](#)

[Users](#)

[RDI](#)

[Institutional](#)

[Gardeny](#)

[PCiTAL](#) | [Location](#) | [Productive Environment](#) | [Lleida in the exterior projection of Catalonia](#) | [The purpose of the Park](#)

## The Parc Científic i Tecnològic Agroalimentari de Lleida

### Objectives:

- Create and transfer knowledge
- Guarantee the improvement of competitiveness
- Promote innovation, excellence and working in a network
- Revitalise innovative activities in the area

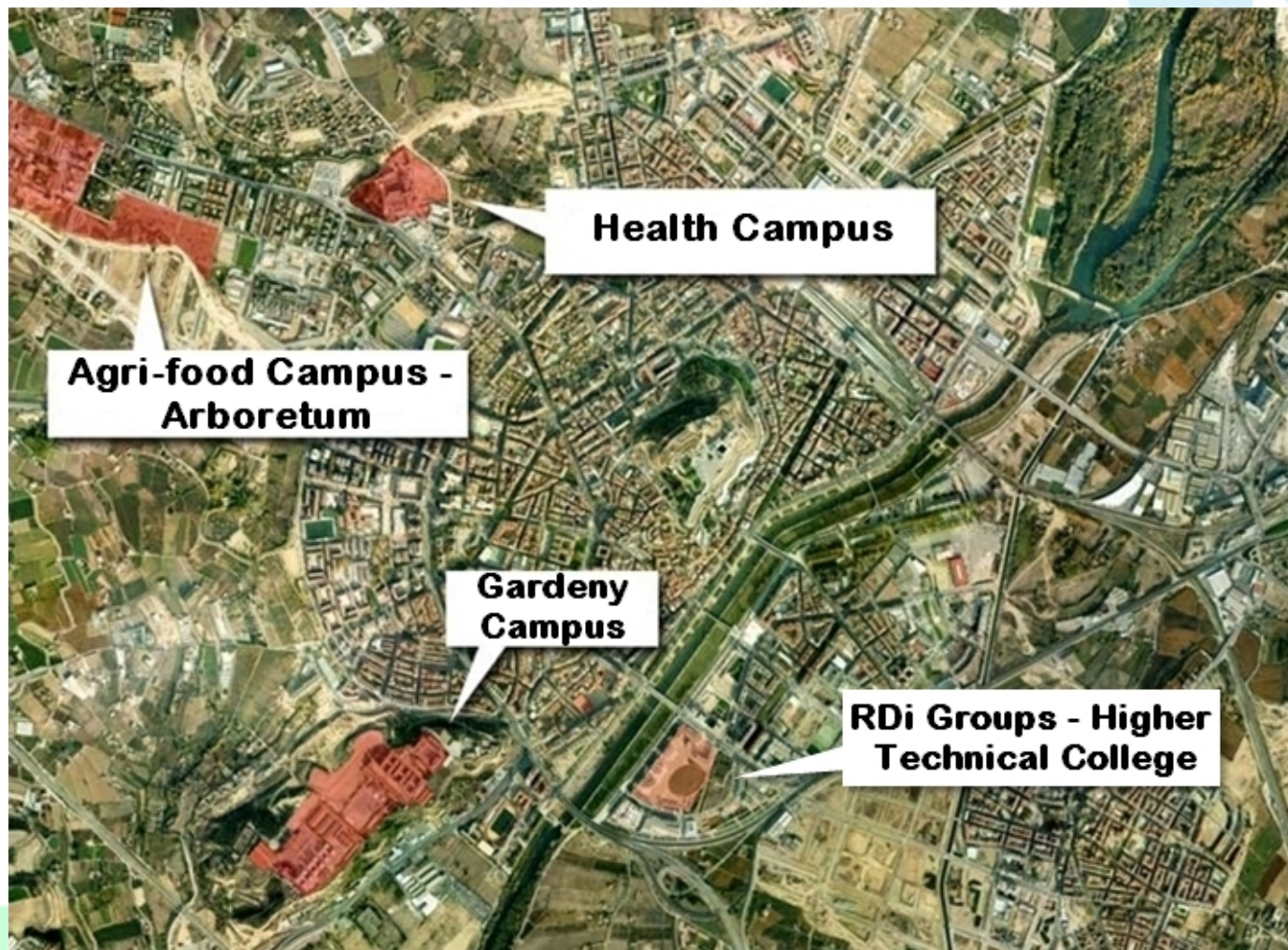
### Competitive advantage:

- Specialisation in the agro-industry, a key sector of Lleida's territory

### Vision:

- Centre of reference and European leader in the agro-food sector.

The Parc Científic i Tecnològic Agroalimentari de Lleida is a strategic investment for Lleida





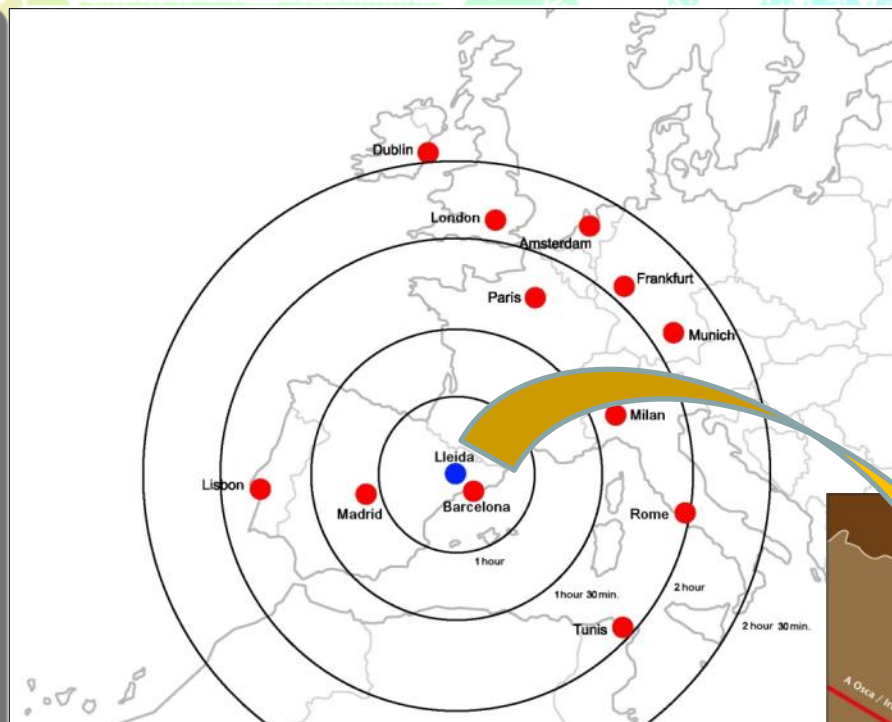
## Location

The latter is an emblematic location with former military uses.

It is accessible by:

- AP2 (Turnpike)
- A2 highway
- AVE
- Airport

20 million people within a distance of 2 hours.



## Productive environment

The food industry:

In Spain :

- 17.2 % of the net sales of industrial products
- 20.4 % of the consumption of raw materials
- 13.7 % of jobs

In Catalunya:

- 5% GDP
- 20.4 % of the sector's employment
- 21.7 % of the added value
- 18 % of Catalan exportation

In Lleida:

- Up to 30% of the Regional GDP
- 65 % of all exportation

Sources:

\*\* Enquesta Industrial d'Empreses (Quaderns d'Informació Econòmica)

\* Anuari Econòmic Comarcal (Caixa de Catalunya)

### Main technological trends in the sector :

- Quality, safety and traceability
- Conservation and packaging
- Industrial processes and food transformation
- New products and improvement of properties
- Information and communication technology



[Environment](#)[Spaces](#)[Services](#)[Users](#)[RDI](#)[Institutional](#)[Gardeny](#)[PCiTAL](#) | [Location](#) | [Productive Environment](#) | [Lleida in the exterior projection of Catalonia](#) | [The purpose of the PCiTAL](#)

## The purpose of the Science Park

Contribute value to the agro-food specialty.

Integrate the scientific - technological and productive systems of this environment.

- Manage the flow of information, knowledge and technology
- Stimulate innovative companies
- Provide services of added value
- Provide great quality spaces and facilities





[Environment](#)

[Spaces](#)

[Services](#)

[Users](#)

[RDI](#)

[Institutional](#)

[Gardeny](#)

[Gardeny](#) | [Arboretum ETSEA](#) | [Health Campus](#)

[Technological H1](#) | [Technological Transfer H2](#) | [Scientific H3](#) | [CeDiCo](#) | [Incubators](#) | [Innova](#) | [Magical](#) | [CPD and ICT incubators](#) | [Fruitecentre](#)

## Gardeny

Central enclave of the park where an important part of its infrastructure is located.

108.000 m2 Managed surface

40.385 m2 Roof of buildings

85M€ Total investment

69,000 m<sup>2</sup> of Botanical Garden at the Campus Agricultural



[Environment](#)[Spaces](#)[Services](#)[Users](#)[RDI](#)[Institutional](#)[Gardeny](#)[Gardeny](#) | [Arboretum ETSEA](#) | [Health Campus](#)[Technological H1](#) | [Technological Transfer H2](#) | [Scientific H3](#) | [CeDiCo](#) | [Incubators](#) | [Innova](#) | [Magical](#) | [CPD and ICT incubators](#) | [Fruitecentre](#)

## Technological H1 Building

This building is planned for the installation of companies of advanced services and technological sectors related with the ICT and knowledge.

### Facilities:

- Building GF+2 (5,500 m<sup>2</sup> gross floor space).
- Common spaces for totally equipped meetings.

### Occupied by:

- Practically the whole building is already occupied or promised to companies that work with information technology.





## Technological Transfer H2 Building

The objective of this building is to house technology transfer centres.

### Facilities:

- Building GF+2 and annex (6,200 m<sup>2</sup> gross floor space).
- Common rooms for totally equipped meetings.

### Occupied by:

- Institut Tecnològic de Lleida (Centre of technological diffusion in sustainable construction).
- Incafust, Institut Català de la Fusta.
- Consorci Lleidatà de Control (Building and public works quality control).





[Environment](#)[Spaces](#)[Services](#)[Users](#)[RDI](#)[Institutional](#)[Gardeny](#)[Gardeny](#) | [Arboretum ETSEA](#) | [Health Campus](#)[Technological H1](#) | [Technological Transfer H2](#) | [Scientific H3](#) | [CeDiCo](#) | [Incubators](#) | [Innova](#) | [Magical](#) | [CPD and ICT incubators](#) | [Fruitecentre](#)

## Scientific H3 Building

Houses research groups from the University, company laboratories and public and private R&D centres.

### Facilities:

- Building GF+2 (5,500 m<sup>2</sup>).
- High quality facilities (laboratories already equipped for exclusive and common use services).



## CeDiCo Building (Center of the Design of the Knowledge)

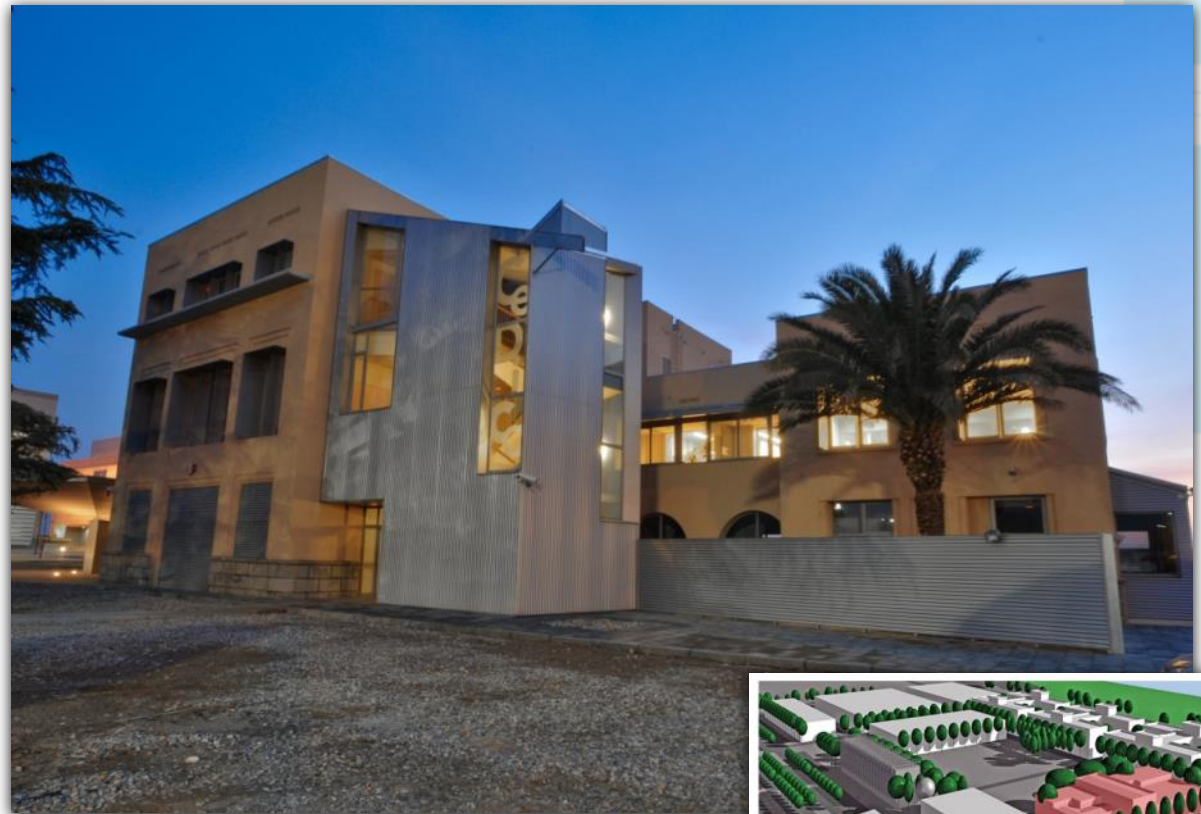
This building will promote the generation of new knowledge by means of the practice of collaborative competition.

### Facilities:

- Central services of the PCiTAL Consortium
- Presentation areas (160 m<sup>2</sup>)
- Auditorium with a 150 person capacity
- Modular rooms for meetings (220 m<sup>2</sup>) equipped with video projectors and digital whiteboards

### Activities:

- Creative workshops
- PCiTAL Network
- Development of collaborative tools





[Environment](#)[Spaces](#)[Services](#)[Users](#)[RDI](#)[Institutional](#)[Gardeny](#)[Gardeny](#) | [Arboretum ETSEA](#) | [Health Campus](#)[Technological H1](#) | [Technological Transfer H2](#) | [Scientific H3](#) | [CeDiCo](#) | [Incubators](#) | [Innova](#) | [Magical](#) | [CPD and ICT incubators](#) | [Fruitecentre](#)

## Incubators

### Facilities:

- Current incubator:  
building with 1,500 m<sup>2</sup> of floor space, with facilities for companies, currently occupied by more than 22 companies, conference rooms, cafeteria and administrative services.
- ICT incubator :  
800 m<sup>2</sup> available in two floors with 5 spaces of 100 m<sup>2</sup> and 6 spaces of 40 m<sup>2</sup> available
- INCUBA:  
Building for the promotion of agro-food companies.

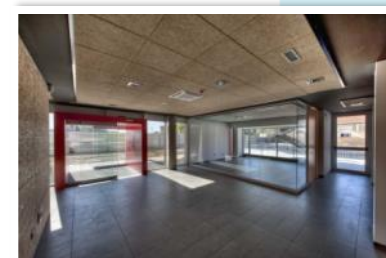


[Environment](#)[Spaces](#)[Services](#)[Users](#)[RDI](#)[Institutional](#)[Gardeny](#)[Gardeny](#) | [Arboretum ETSEA](#) | [Health Campus](#)[Technological H1](#) | [Technological Transfer H2](#) | [Scientific H3](#) | [CeDiCo](#) | [Incubators](#) | [Innova](#) | [Magical](#) | [CPD and ICT incubators](#) | [Fruitecentre](#)

## Incuba Building (Innova Complex)

Newly constructed building appointed to manage and promote the research and corporate environment of the park.

It is expected the first phase of 6,000 m<sup>2</sup> of roof and two additional phases to build the same size as that generated employment needs.





[Environment](#)[Spaces](#)[Services](#)[Users](#)[RDI](#)[Institutional](#)[Gardeny](#)[Gardeny](#) | [Arboretum ETSEA](#) | [Health Campus](#)[Technological H1](#) | [Technological Transfer H2](#) | [Scientific H3](#) | [CeDiCo](#) | [Incubators](#) | [Innova](#) | [Magical](#) | [CPD and ICT incubators](#) | [Fruitecentre](#)

## CPD and ICT incubators

Newly constructed building that houses the corporate CPD and the private CPD of the Park's companies.

Facilities for ICT companies.

Incubator of emergent ICT companies.

### Facilities:

- 1,500 m<sup>2</sup>, of which 800 m<sup>2</sup> is ground floor and the rest is subterranean (CPD space).



## Magical Building

Experimental Centre for the production, digitalization and storage of audio-visual multimedia.

It will generate a collaborative environment in the field of audio-visual production.

It will facilitate entrepreneurial initiative and innovation.

It will develop the audio-visual and communication sector.

It will take advantage of the perspectives for digital service creation and diffusion.

### Facilities:

- More than 7,000 m<sup>2</sup> of floor space, with state-of-the-art equipment.
- 3 buildings: Theatre, Set and building T, appointed to house the Digital Audio-visual Archives, as well as postproduction and training facilities.

### Activities:

- Production and audio-visual digitalization centre (sets, production, postproduction).
- Digital audio-visual archiving (consultation, storage, etc).
- Management (local TV, Magical management, TDT theatre)





[Environment](#)[Spaces](#)[Services](#)[Users](#)[RDI](#)[Institutional](#)[Gardeny](#)[Gardeny](#) | [Arboretum ETSEA](#) | [Health Campus](#)[Technological H1](#) | [Technological Transfer H2](#) | [Scientific H3](#) | [CeDiCo](#) | [Incubators](#) | [Innova](#) | [Magical](#) | [CPD and ICT incubators](#) | [Fruitecentre](#)

## FRUITCENTRE

Fruitcentre, Technologic center of fruit, is a 6,465 m<sup>2</sup> experimental facility that provides services, appropriate human resources and equipment for the comprehensive generation and application of scientific and technical knowledge in fruit value from the crop or seed to the consumer.

21 Laboratories  
120 engineers



[Environment](#)[Spaces](#)[Services](#)[Users](#)[RDI](#)[Institutional](#)[Gardeny](#)[Gardeny](#) | [Arboretum ETSEA](#) | [Health Campus](#)[Technological H1](#) | [Technological Transfer H2](#) | [Scientific H3](#) | [CeDiCo](#) | [Incubators](#) | [Innova](#) | [Magical](#) | [CPD and ICT incubators](#) | [Fruitecentre](#)

## Arboretum - ETSEA

6.9 hectares of land with collections of plants and crops from the Mediterranean region.

### Facilities:

- Campus of the Advanced Technical School of Agricultural Engineering of the University of Lleida (ETSEA).
- Centre de Recursos Agrícoles i Forestals.
- IRAL: Institut d'Investigació Agroalimentària.





[Environment](#)

[Spaces](#)

[Services](#)

[Users](#)

[RDI](#)

[Institutional](#)

[Gardeny](#)

[Conference and presentation rooms](#) | [Advanced telecommunication services](#) | [Technological Services Platform](#)  
[Entrepreneurial support](#) | [Common use administrative services and equipment](#)

## Advanced telecommunication services

The Park has CPD services, technical rooms, voice services, information services, mobility services, video conferencing, etc.

Also available: unit services (user, port, point, terminal, etc.) and user services.



[Environment](#)

[Spaces](#)

[Services](#)

[Users](#)

[RDI](#)

[Institutional](#)

[Gardeny](#)

[Conference and presentation rooms](#) | [Advanced telecommunication services](#) | [Technological Services Platform](#)  
[Entrepreneurial support](#) | [Common use administrative services and equipment](#)

## Technological Services Platform

### Objective:

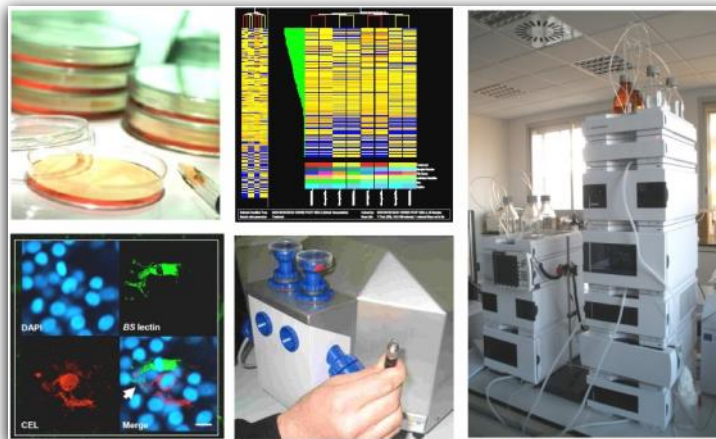
- Promote innovation in the agro-food industry sector.
- "Point of union" between the technological, corporate sector and the "academic world".

### Equipment :

- Highly sensitive and specific analytical equipment, based on the most modern chromatographic methodology and mass spectrometry with different ionization options (Q-TOF).
- The PST offers value added facilities to the corporate sector, taking advantage of the experience of the research groups of the University of Lleida.

### Location:

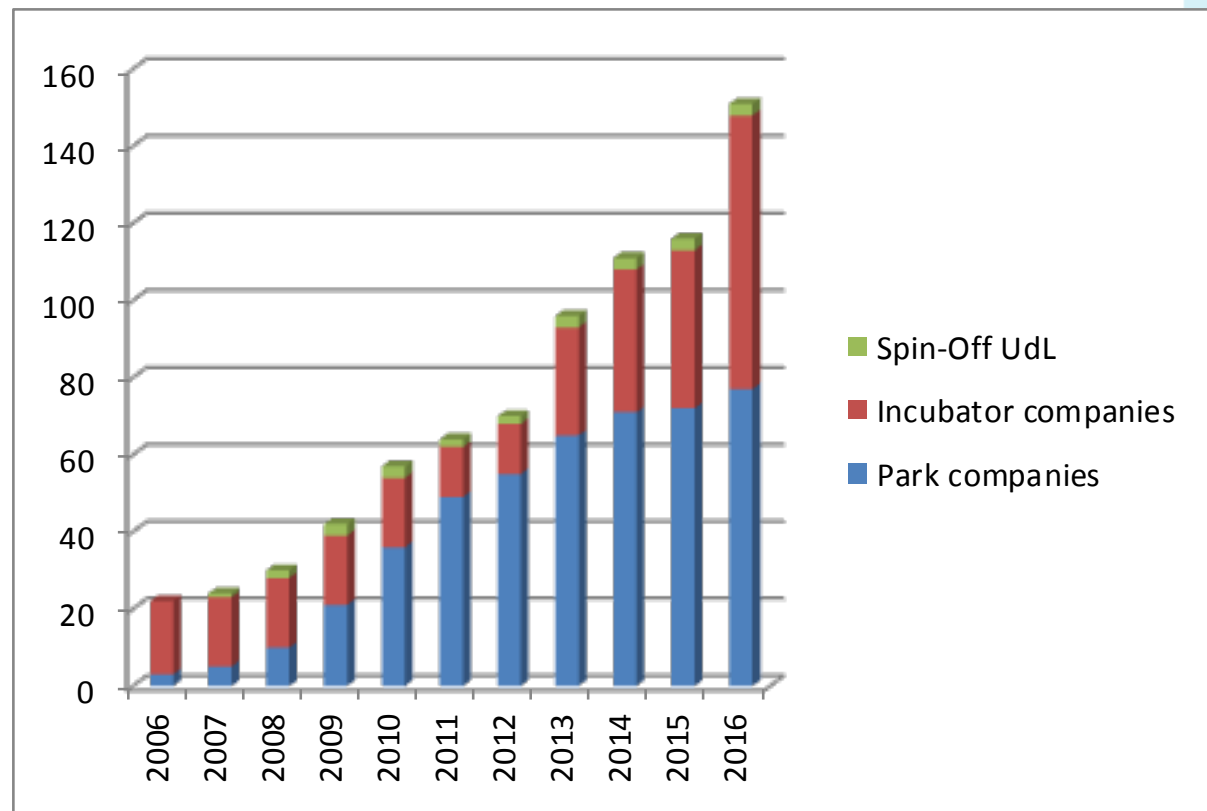
Scientific H3 Building





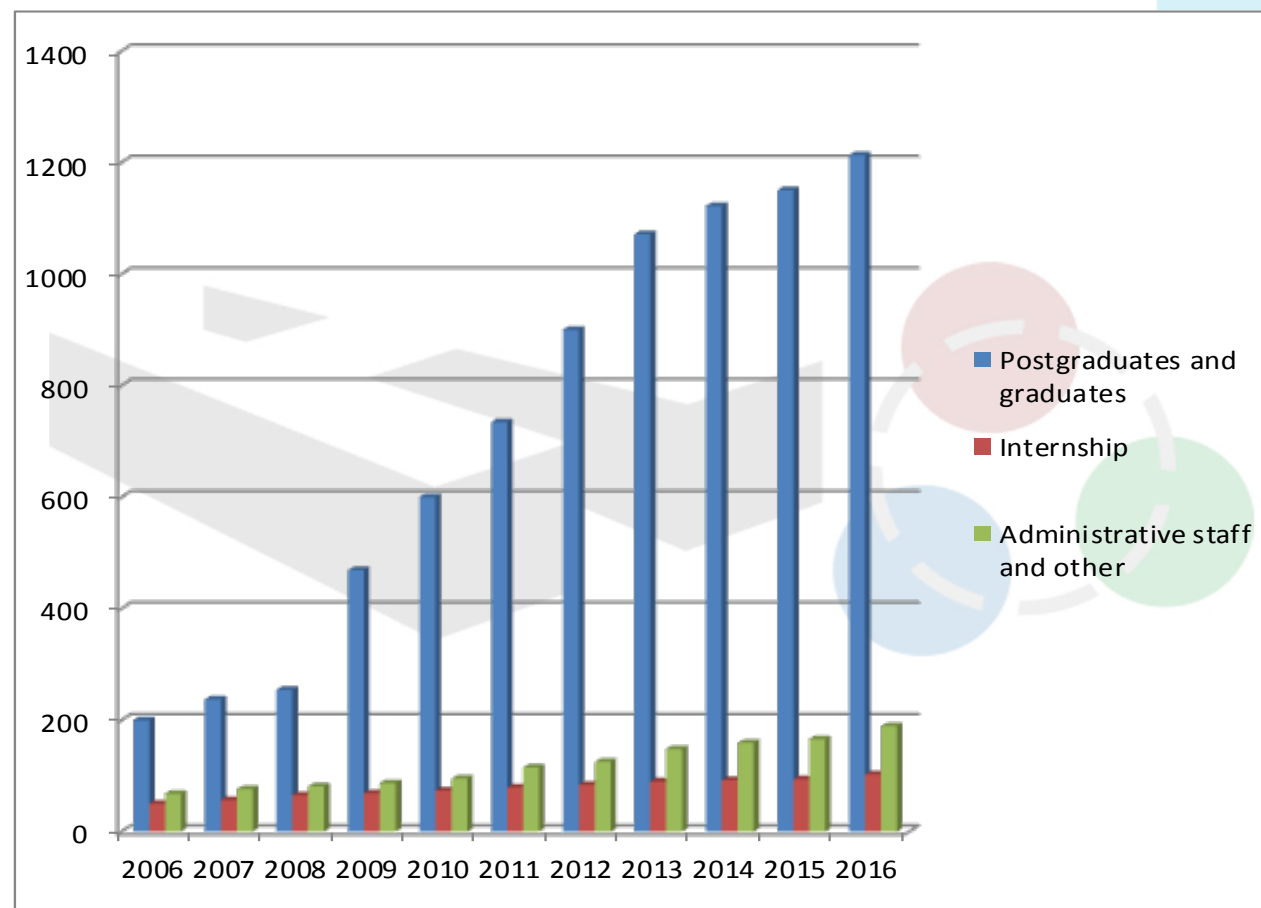
[Environment](#)[Spaces](#)[Services](#)[Users](#)[RDI](#)[Institutional](#)[Gardeny](#)[Development of the companies 2006-2016](#)[Development of the workers 2006-2016](#)[Annual Turnover](#)[Incubator company list](#)[Park company list](#)

## Development of the companies 2006-2016



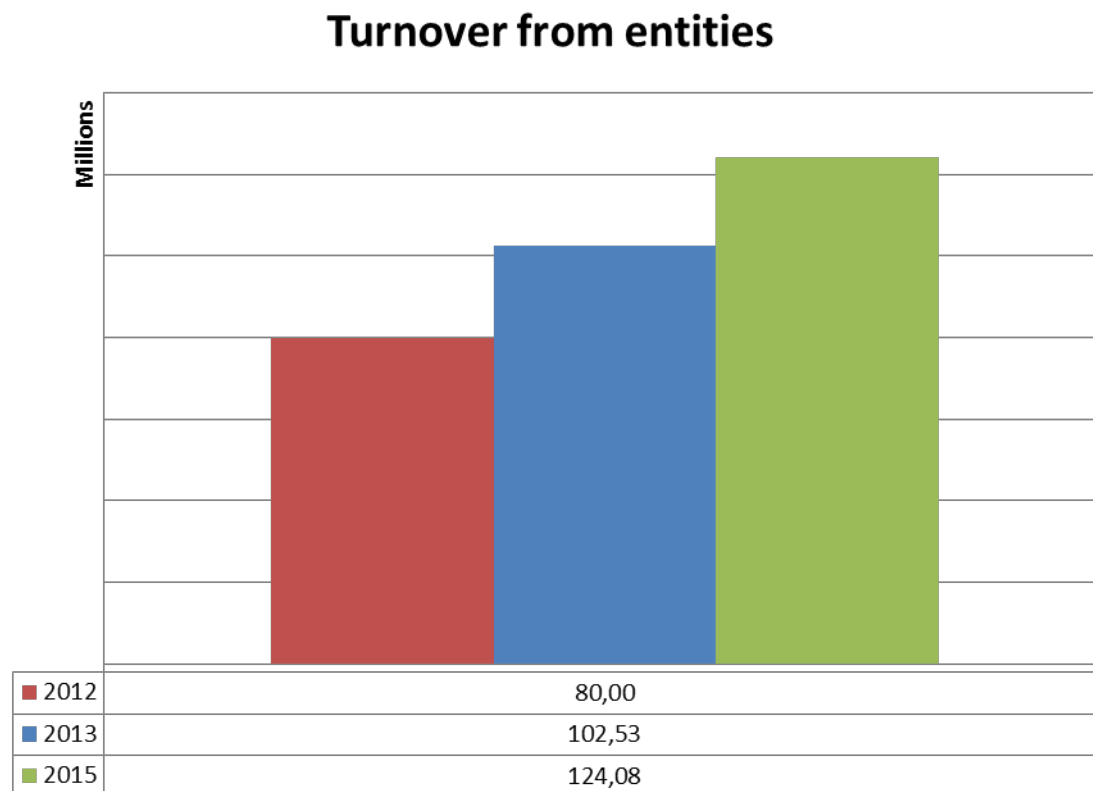
[Environment](#)[Spaces](#)[Services](#)[Users](#)[RDI](#)[Institutional](#)[Gardeny](#)[Development of the companies 2006-2016](#)[Development of the workers 2006-2016](#)[Annual Turnover](#)[Incubator company list](#)[Park company list](#)

## Development of the workers 2006-2015





## Annual Turnover from entities of the Science Park



[Environment](#)[Spaces](#)[Services](#)[Users](#)[RDI](#)[Institutional](#)[Gardeny](#)[Development of the companies 2006-2016](#) | [Incubator company list](#) | [Park company list](#)[Development of the workers 2006-2016](#) | [Annual Turnover](#)

## Incubator company list

- REPLAY IMATGE I TELEVISIÓ
- SAGARIS
- SERGAVE
- VIRUSSIN
- USE-IT
- TE-SIS SOLUCIONS
- SUMMAPRECISIÓ - SOLUCIONS EN AGRICULTURA DE PRECISIÓ
- FEDERACIÓ ALLEM
- NEOSALUS
- KASTELL TECNOLOGIA
- ADER TAXI COMERCIAL
- INSTAMINA
- ANT TECHNOLOGY
- HELIOS CONSULTING GROUP
- LEARNING ENGLISH DEVELOPMENT
- INTEREMPRESAS (AGORAVON)





[Environment](#)[Spaces](#)[Services](#)[Users](#)[RDI](#)[Institutional](#)[Gardeny](#)[Development of the companies 2006-2016](#) | [Development of the workers 2006-2016](#) | [Annual Turnover](#) | [Incubator company list](#) | [Park company list](#)

## Park company list

- INDRA SOFTWARE LABS
- INDRA OUTSOURCING
- INQUA
- FUNDACIÓ INSTITUT TECNOLÒGIC LLEIDA
- INSTITUT CATALÀ DE LA FUSTA – INCAFUST
- ROS ROCA
- FEMAC
- MAQCENTRE
- PLATAFORMA SERVEIS TECNOLÒGICS DEL PARC
- IFR GROUP
- SEMIC
- LLEIDA.NET
- GFT
- MAGICAL MEDIA
- CENTRE TECNOLÒGIC FORESTAL DE CATALUNYA
- AIGÜES LLEIDA LAB
- BDIGITAL – CENTRE TECNOLÒGIC
- GLOBAL LLEIDA
- MICROSOFT INNOVATION CENTER

**indra****RosRoca****IFR**  
GROUP**Lleida.net**

La Primera Operadora Certificadora

**Microsoft**Innovation Center  
Productivity**magical**  
MEDIA**ITL**  
INSTITUT  
TECNOLÒGIC  
DE LLEIDA**semic**  
Effective IT Solutions**aqualia** LAB  
LleidaBARCELONA CENTRE  
DIGITAL TECNOLÒGIC  
**bdigital****Incafust**  
institut català de la fusta**FEMAC.CAT**CENTRE TECNOLÒGIC  
FORESTAL DE CATALUNYA**GLOBALLEIDA**

[Environment](#)[Spaces](#)[Services](#)[Users](#)[RDI](#)[Institutional](#)[Gardeny](#)[Development of the companies 2006-2016](#) | [Incubator company list](#) | [Park company list](#)[Development of the workers 2006-2016](#) | [Annual Turnover](#)

## Park company list

- AXEB BIOTECH
- CAEM – CENTRE D'ART D'ÈPOCA MODERNA
- ILNOVA
- OPTIMAL ESSENCE PRODUCTIONS
- INCIBE – INSTITUTO NACIONAL DE CIBERSEGURIDAD
- SALTÓ TECHNOLOGICAL GROUP
- WEBPSILON
- ARXIU MUNICIPAL DE LLEIDA
- IMAGINA
- AXONGRAFICS
- ACUSTICS AMBIENT
- EGUREN R&D SOLUTIONS
- ECS TECNOLOGIA
- IRTA
- NEOSALUS
- DIETARY MOLECULAR DIAGNOSTICS



Ajuntament de Lleida  
**Arxiu Municipal de  
Lleida**



agència web i de comunicació visual



INSTITUTO NACIONAL DE CIBERSEGURIDAD



Dietary Molecular Diagnostics

[Environment](#)[Spaces](#)[Services](#)[Users](#)[RDI](#)[Institutional](#)[Gardeny](#)[Development of the companies 2006-2016](#) | [Incubator company list](#) | [Park company list](#)[Development of the workers 2006-2016](#)[Annual Turnover](#)

## Park company list

- AGRIFOOD
- PONENT2002
- IRB LLEIDA
- NUTREN
- DBA
- ARBORETUM LLEIDA
- GREA
- GRIHO
- CENTRE D'ESTUDIS PORCINS DE TORRELAMEU
- AQUALOGY
- AMERICAN ORTHODONTICS
- LLEIDA DRONE LAB
- ADIBIO
- GAINN COOPERATIVE INNOVATION





[Environment](#)[Spaces](#)[Services](#)[Users](#)[RDI](#)[Institutional](#)[Gardeny](#)[Development of the companies 2006-2016](#) | [Incubator company list](#) | [Park company list](#)[Development of the workers 2006-2016](#) | [Annual Turnover](#)

## Park company list

- QR CAFE
- CONSORCI PER LA NORMALITZACIÓ LINGÜÍSTICA
- SHALOM TALLER
- DOWN LLEIDA
- BANC DE RECURSOS
- CONSORCI DE BIBLIOTEQUES UNIVERSITÀRIES DE CATALUNYA – CBUC
- TELEVIDA SERVEIS SOCIOANITARIS
- SPECIAL NEW FRUIT LICENSING MEDITERRANEO
- LIQUID GALAXY LAB
- IDI EUREKA
- ENTRE3INTERIORISTAS
- OPP GROUP
- OPENNATUR
- SOSTECA
- IKIHAUS





**Parc de Gardeny, CeDiCo building, 1st floor  
25071, Lleida  
Tel. +34 973 27 29 22 / Fax. +34 973 26 71 61  
[www.parcteclleida.es](http://www.parcteclleida.es)**